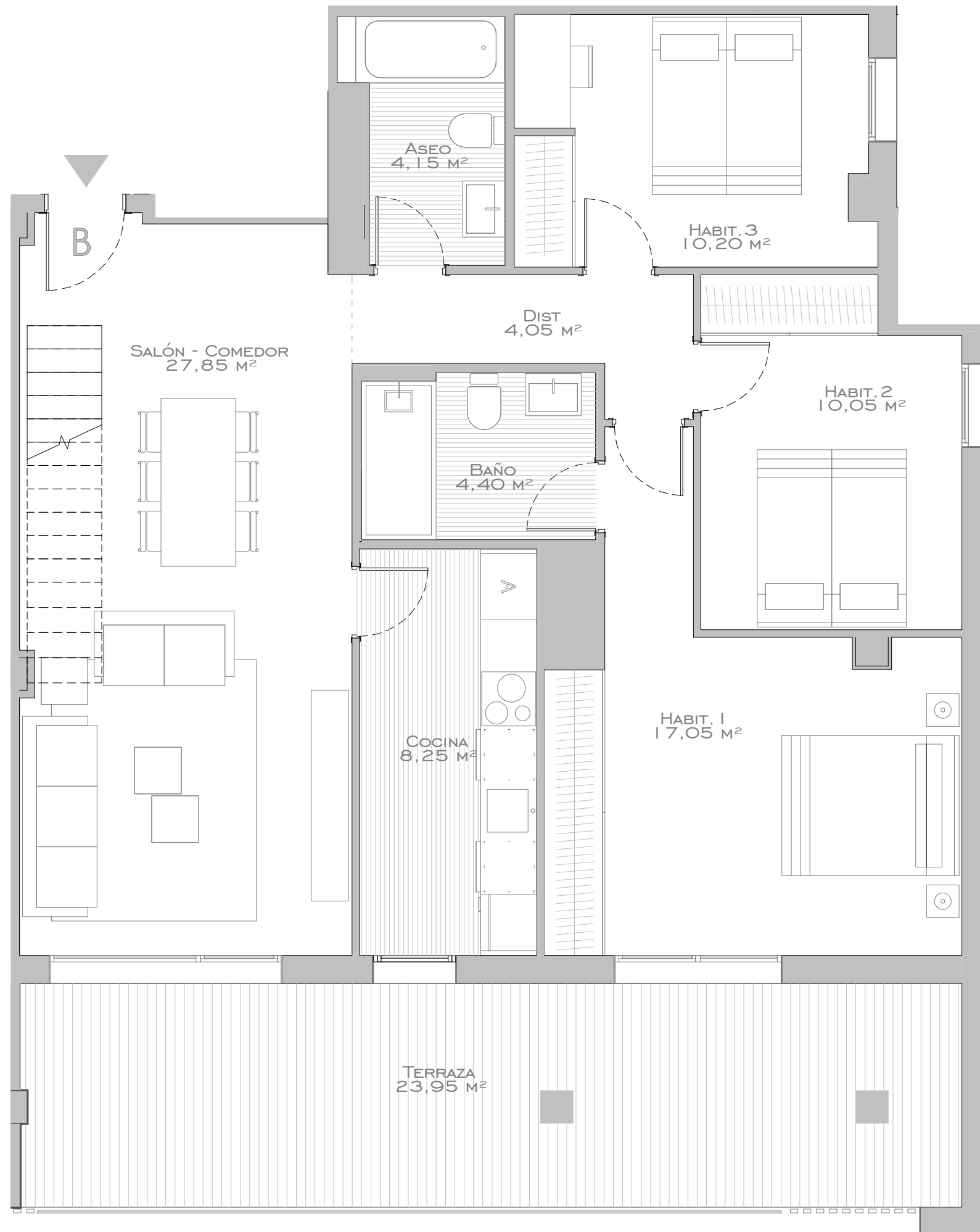
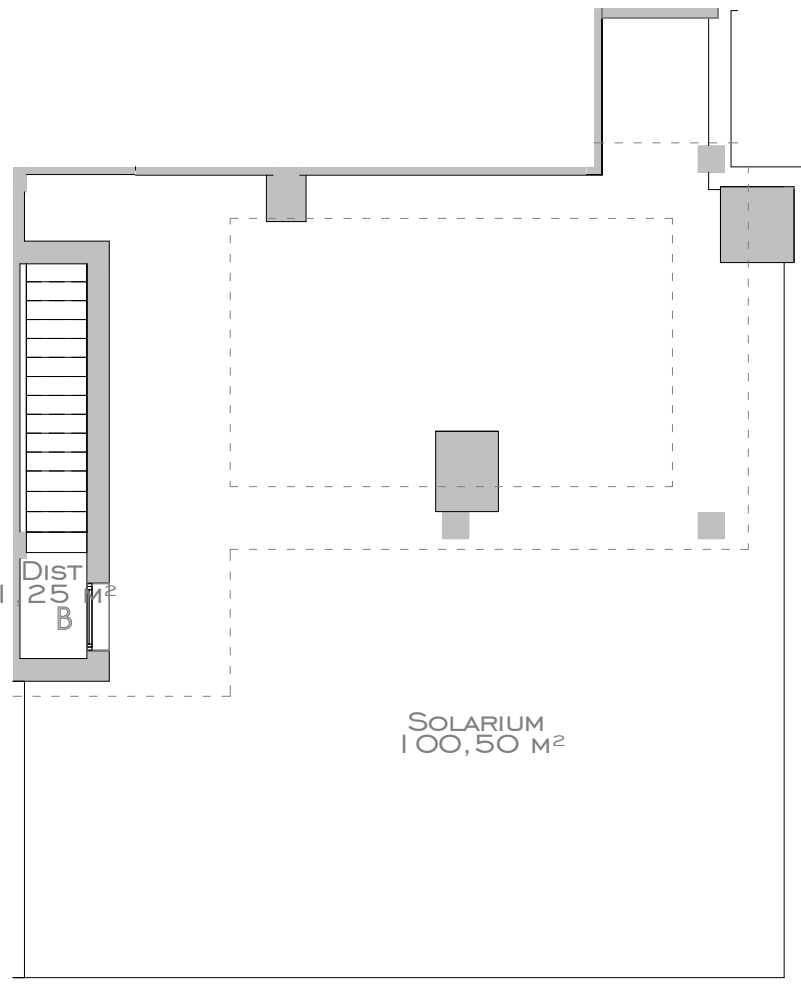


Tipología B₃

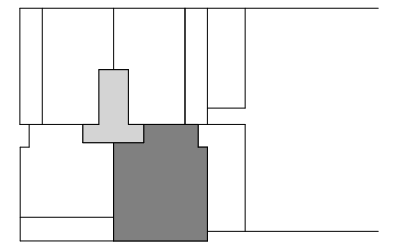
(9ª-10ª
ÁTICO CON
SOLÁRIUM)



RESIDENCIAL ORIGEN



PARCELA C-25 ARCOSUR
72 VIVIENDAS, GARAJES Y
TRASTEROS



ESPECIFICACIONES TÉCNICAS

| | |
|--------------|---|
| DORMITORIOS | 3 |
| BAÑO | 1 |
| ASEO | 1 |
| TRASTERO | 1 |
| PLAZA GARAJE | 1 |

SUPERFICIES (M²)

| | |
|-------------------|-----------------------|
| SUP. ÚTIL CERRADA | 87,25 M ² |
| SUP. ÚTIL ABIERTA | 124,45 M ² |
| TOTAL SUP. ÚTIL | 211,70 M ² |

ARQUITECTOS:



C25

RESIDENCIAL

